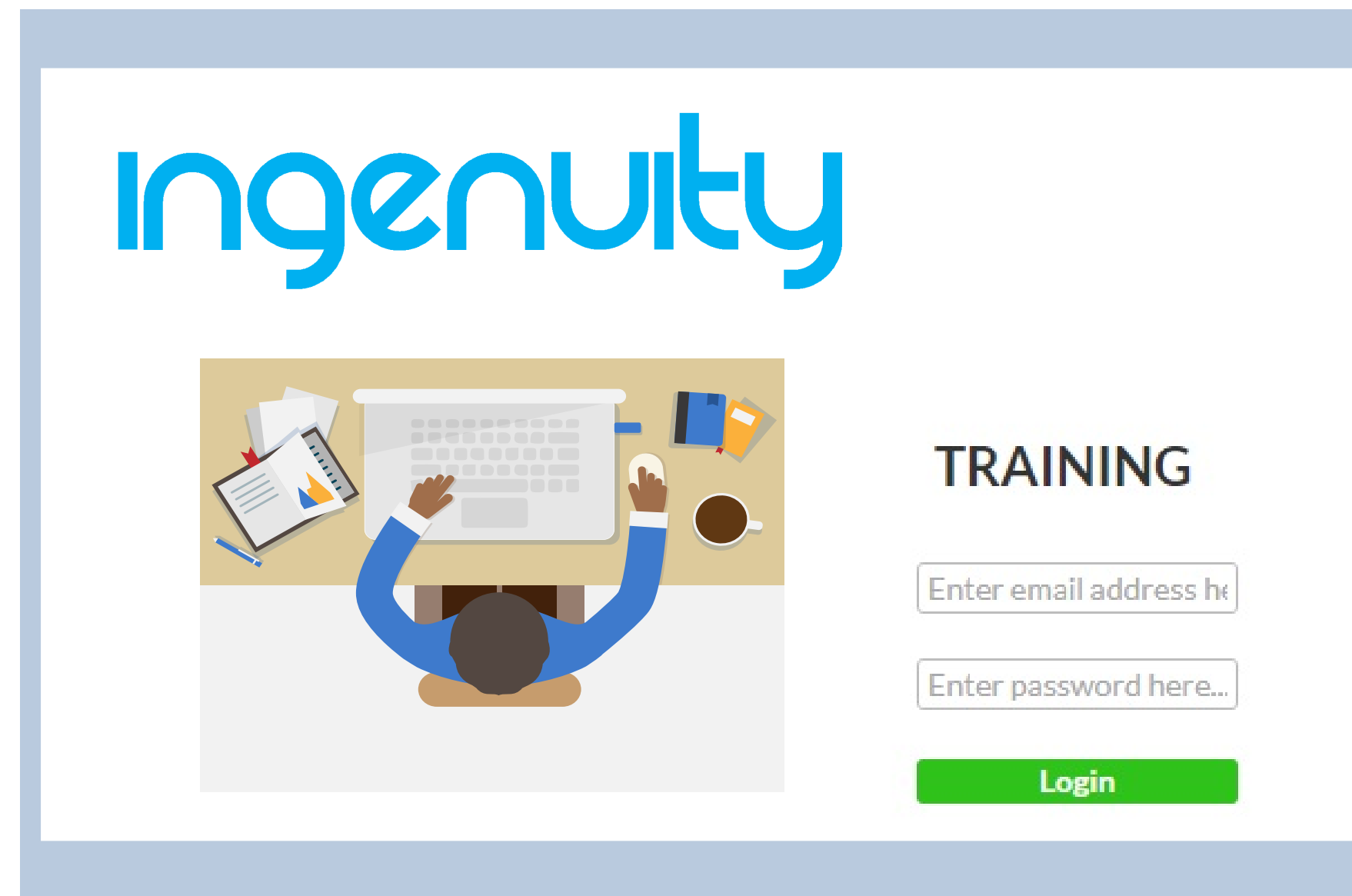


WHAT IS ilearner?



ingenuitylearner (ilearner) is a corporate learning management system (LMS), which automates the training process for organizations small and large leading to increased productivity, reduced operational cost and increased earnings

ilearner FEATURES

What are the features of ilearner?



Remote
Access
Training



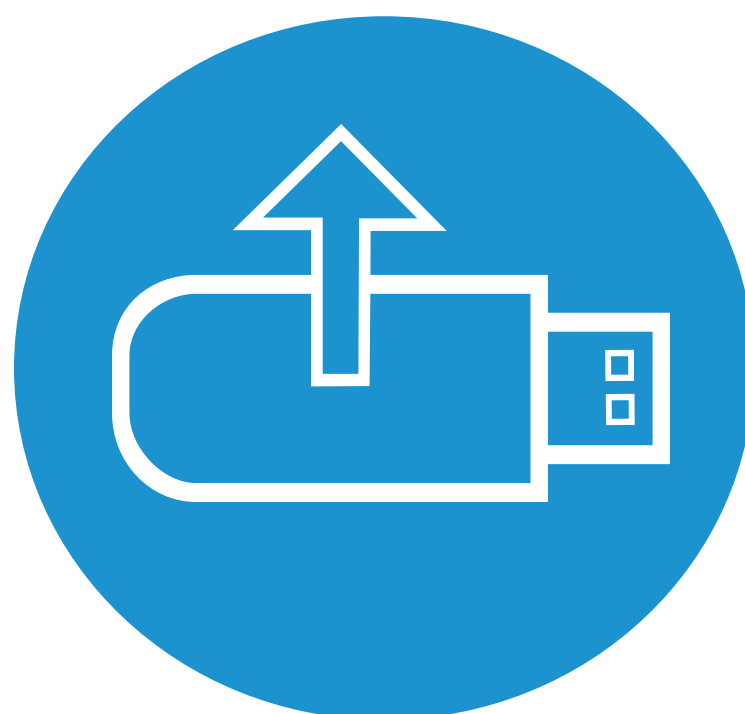
On Demand
Course
Scheduling



Automated
Test Scoring



Real Time
Reporting
Download



Upload Training
Materials to
System



Record assessment
and track progress

PAIN POINTS

These are the pain points most organizations tend to encounter when it comes to training



Costly to plan and organize training sessions



Limitations in the number of persons that can be trained



Lowers company productivity (time away from job tasks)



Time-consuming



Costly to continuously reprint training materials



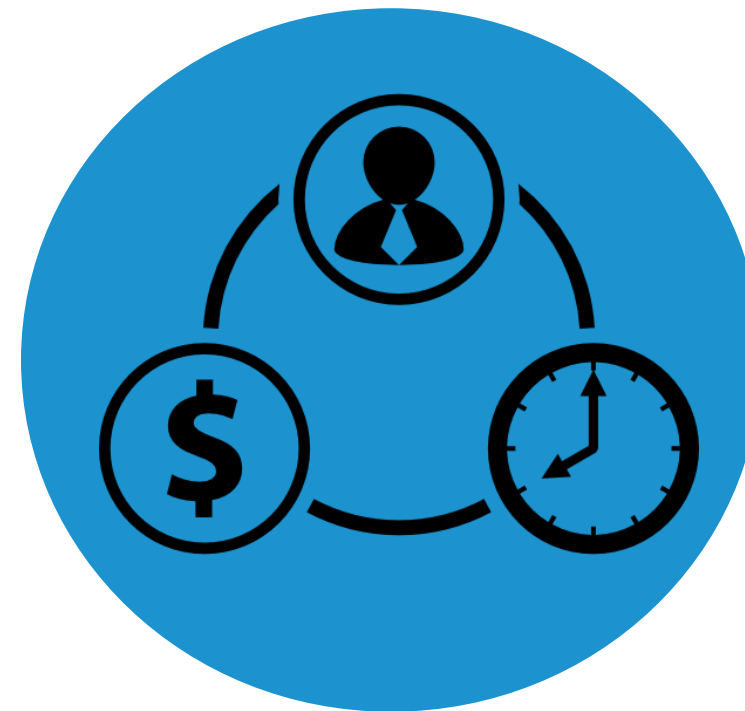
Continuous staff training and improvement is difficult

WHY ilearner?

How does ilearner add value to your organization?



Reduces planning
and organizing
costs



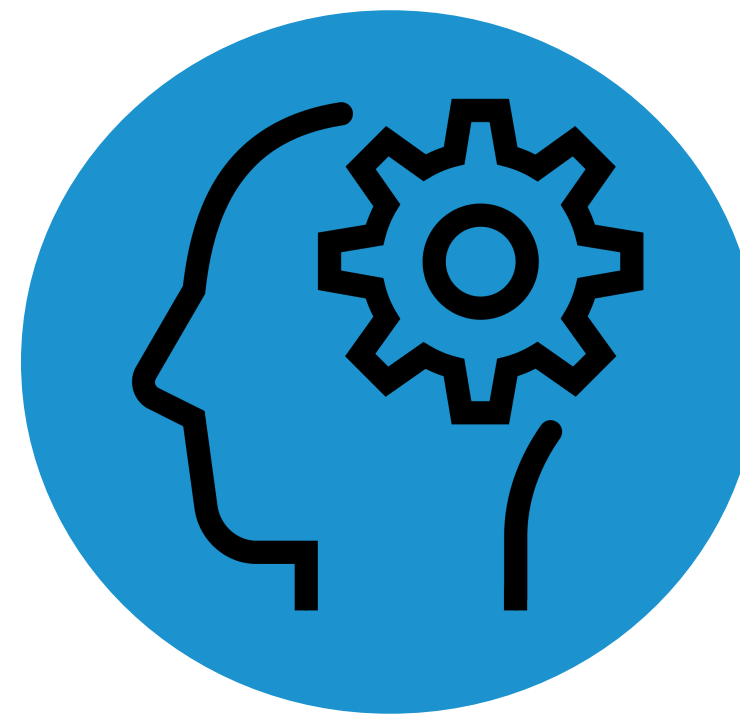
Significantly
reduces training
time



Continuously increases
company earning
potential



Access to materials anytime
and anywhere



Accurate
competency
testing



Remote training
increases training
efficiency

WHY ilearner?

Why else should you choose ilearner's LMS

We use HIPAA global best practices

ilearner Security
Features include:



Access Control



HTTPS



Database Encryption



Audit Trail